



Japan 桜

Cherry Blossom
Small Group Special

March 26-April 4 2026

INCLUDES:

- Destinations: TOKYO, Mt. Fuji, Kyoto, Nara, Osaka, Hiroshima
- Accommodations: 4-star hotels
- Excursions: Guided city tours, cultural experiences, and adventure activities
- Meals: Daily breakfast and 4 dinners
- All local transportations
- ALL attraction's Entry Tickets

CONTACT :

George Palamattam
+1 312 545 6882
gp@cipchicago.org



\$2,485

+

**International
air**

Discovery Journey of Spectacular Japan
www.discoveryjourney.org

DAY1
(MAR 26 2026)

Depart from USA

DAY2
(MAR27 2026)

Haneda Airport

Haneda airport is located in Tokyo bayside. Has a unique shopping area inside where you can enjoy Japanese souvenir. Japan's airport is known for the cleanliness and hospitality. Hotel at Grand Prince Hotel ShinTakanawa or similar.



DAY3
(MAR28 2026)

Tokyo

Japan's most popular tourist destination Asakusa. Famous souvenir shopping street Nakamise street. World 3 rd tallest tower Tokyo land mark tower Tokyo skytree. Modern digital art museum teamLab planets. Sushi for dinner. Grand Prince Hotel ShinTakanawa or similar.



DAY4
(MAR29 2026)

Tokyo

Local train experience in Tokyo. Tokyo Imperial Palace, Most visited shrine in Japan Meiji shrine. World busiest crossing Shibuya crossing. Japanese family restaurant Steak Gust for dinner. Grand Prince Hotel ShinTakanawa or similar.



DAY5
(MAR30 2026)

Day at Leisure

Optional Mt.Fuji & Hakone
(\$200)

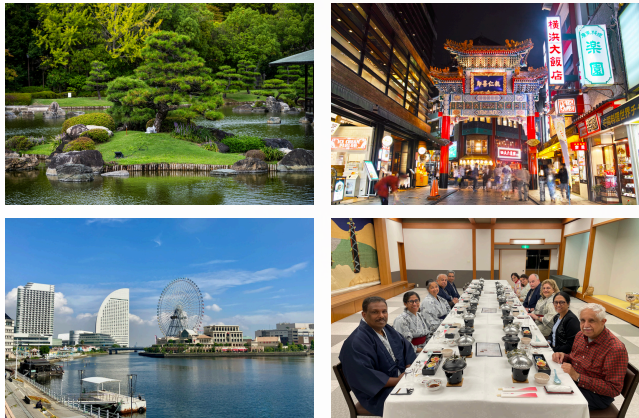
Pirate boat cruise at Hakone ashino lake. Ropeway to Owakudani, active volcano mountain. Hotspring footbath experience. Best view point park of Mt.Fuji.Japan's largest mountain, world heritage. Dinner at Indian Restaurant. Grand Prince Hotel ShinTakanawa or similar.



**DAY 6
(MAR31 2026)**

Yokohama

Explore Yokohama, starting with one of the largest Japanese Garden Sankeien and a relaxing walk through Yamashita Park. Visit the largest China town in Japan, enjoy views from the Yokohama Ropeway. Dinner and stay at Beniya Hotel. Japanese style dinner and comfortable Japanese-western room.



**DAY7
(APR1 2026)**

Kyoto

World famous seemingly endless forest of bamboo. 1,000 Torii gates Fushimi Inari Shrine. Optional Japanese traditional style dinner and Geisha show tour with additional \$100. Shopping at AEON MALL for people who are not selecting optional. Hotel Nikko Osaka or similar.



**DAY8
(APR2 2026)**

Nara & Osaka

World largest wooden structure Todaiji temple and deerpark. The Great Buddha is also known for the largest in Japan. Japan largest Samurai castle Osaka castle. Osaka style food for dinner at Dotonbori Street. Hotel Nikko Osaka or similar.



**DAY9
(APR3 2026)**

Day at Leisure Optional Hiroshima (\$300)

World safest bullet train experience. The Hiroshima peace memorial museum and the atomic dome. Boat cruise to Sacred island Miyajima island. Itsukushima shrine and Daishoin temple world heritage. Hotel Nikko Osaka or similar.



**DAY10
(APR4 2026)**

Kansai International Airport

